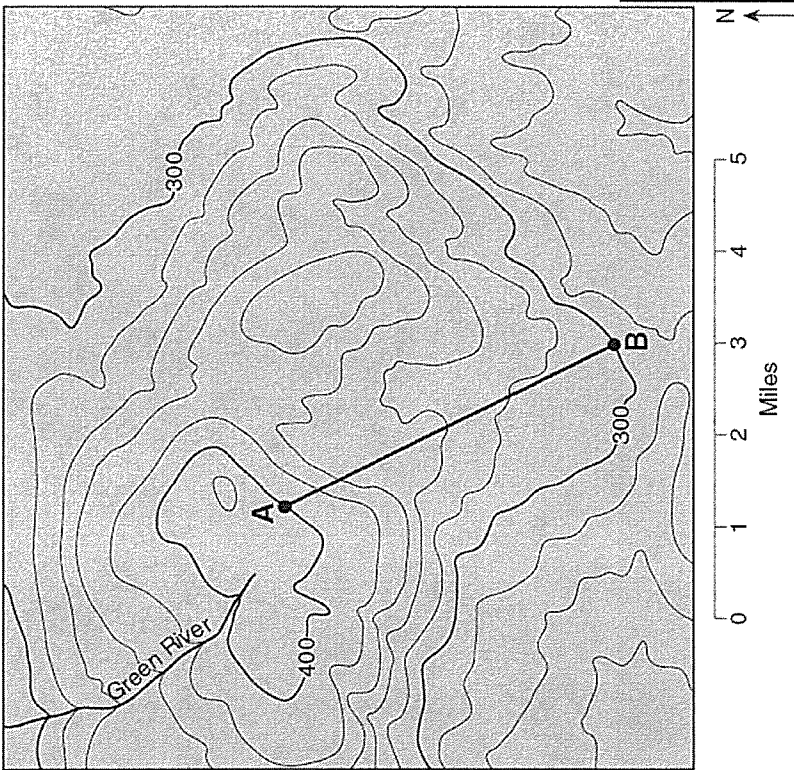
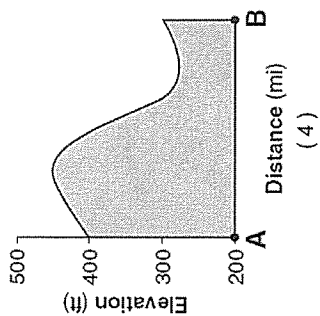
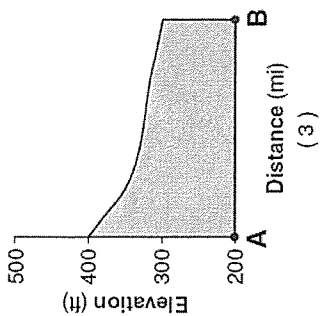
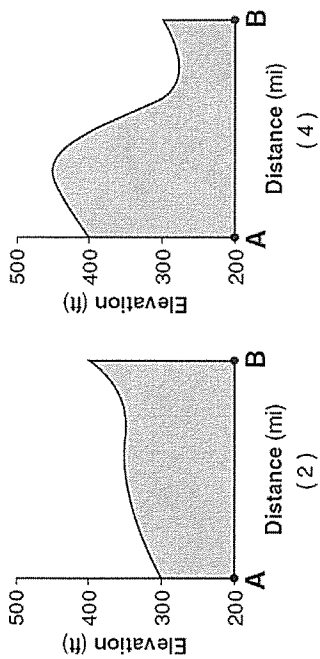
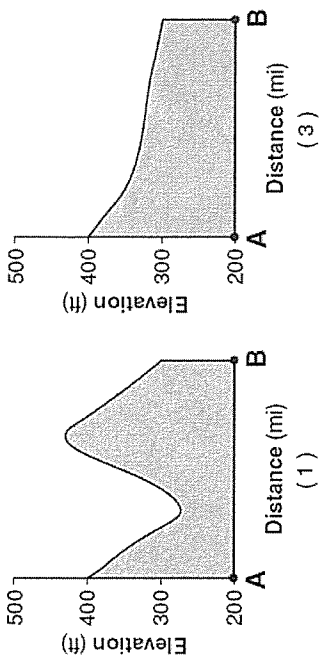


Base your answers to questions 41 through 44 on the topographic map below. Elevations are in feet. Points A and B are locations on the map.

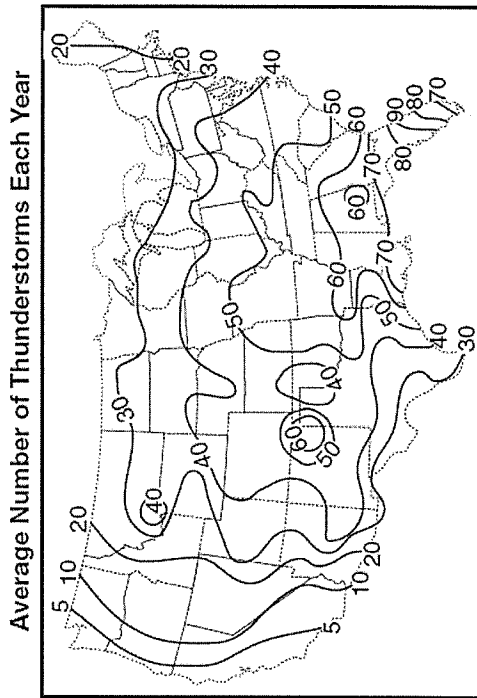


41. Toward which direction does the Green River flow?
 (1) northeast
 (2) northwest
 (3) southeast
 (4) southwest
42. What is the gradient along the straight line between points A and B?
 (1) 10 ft/mi
 (2) 20 ft/mi
 (3) 25 ft/mi
 (4) 35 ft/mi
44. What evidence can be used to determine that the land surface in the northeast corner of the map is relatively flat?
 (1) a rapidly flowing river
 (2) a large region covered by water
 (3) the dark contour line labeled 300
 (4) the absence of many contour lines



43. Which graph best represents the profile along line AB?

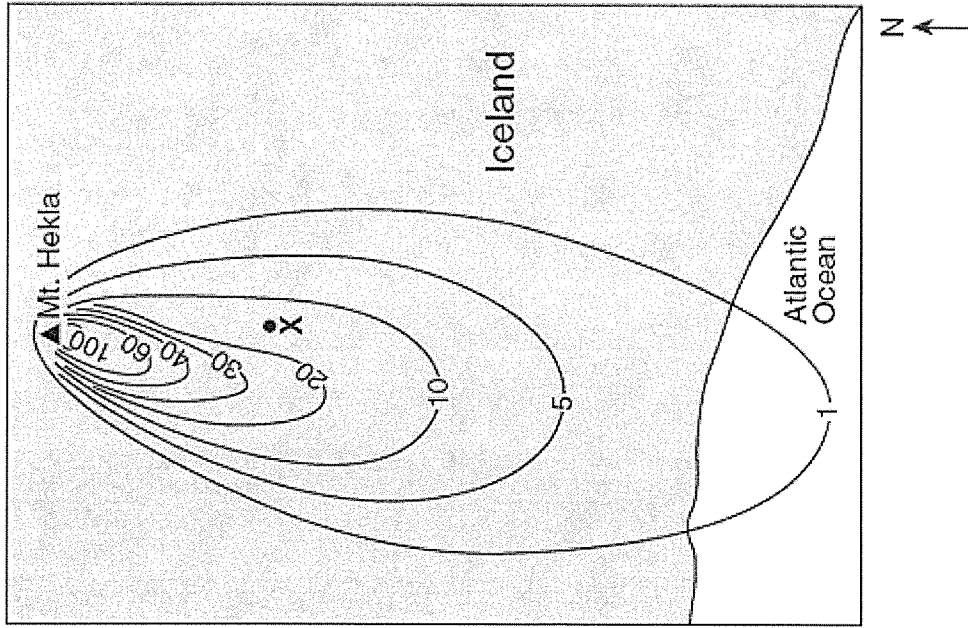
The map below shows the average number of thunderstorms during the year in the continental United States.



Average Number of Thunderstorms Each Year

- Which New York State landscape region normally experiences the most thunderstorms?
 (1) Allegheny Plateau
 (2) Taconic Mountains
 (3) Adirondack Mountains
 (4) Champlain Lowlands

Base your answers to questions 44 through 46 on the map below. The ▲ represents Mt. Hekla, a volcano in Iceland. The isolines represent the thickness of ash, in centimeters, that settled on Earth's surface after a volcanic eruption of Mt. Hekla on March 29, 1947. Point X is a location on the surface of the ash.

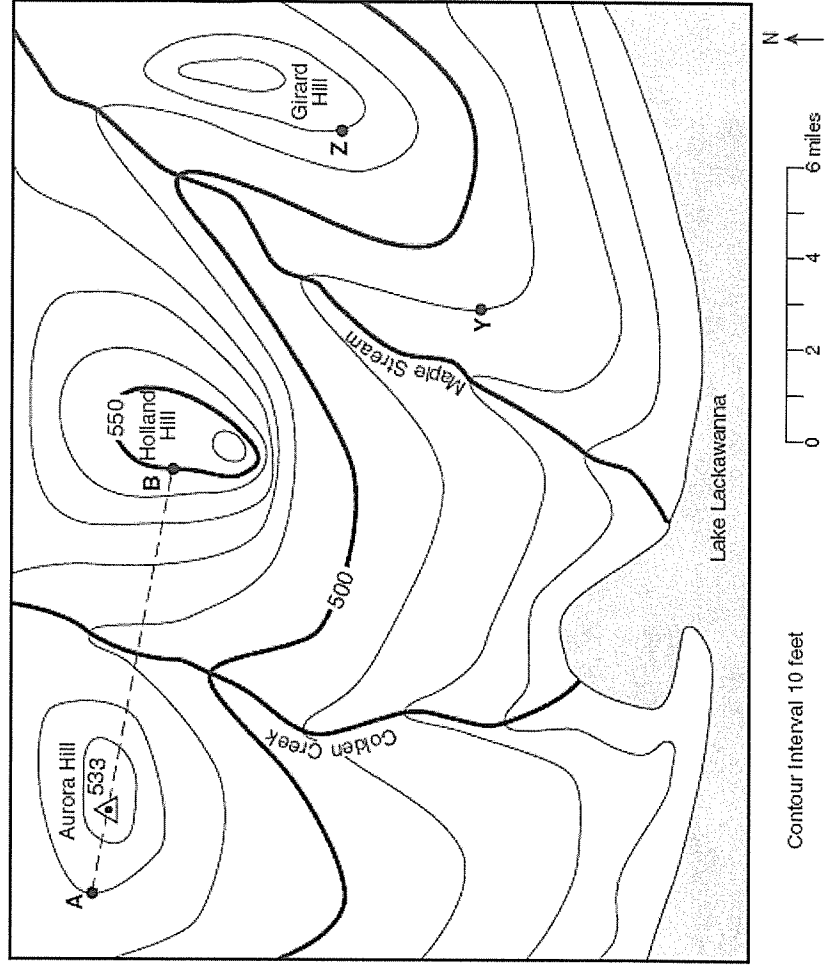


- 44 At the time of the eruption, the wind direction was primarily from the
- (1) east
 - (2) west
 - (3) north
 - (4) south

- 45 How many centimeters thick was the ash beneath point X?
- (1) 0
 - (2) 15
 - (3) 20
 - (4) 25

State the general compass direction in which Maple Stream is flowing. [1]

Calculate the gradient between points Y and Z on the map, and label the answer with the correct units. [2]



Contour Interval 10 feet

0 2 4 6 miles